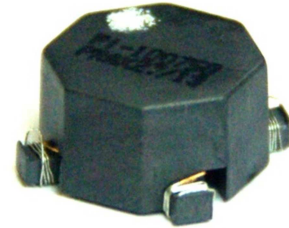


Features

- Low size SMT mounting component
- Operational insulation - 1500 Vdc between Gate and Drive
- Operating frequency: 50kHz to 500kHz
- Operating temperature: -40°C to 130°C



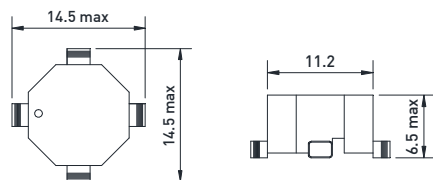
Part Number	Turns Ratio	Volt-time product	Primary Inductance	Leakage Inductance	DCR Primary	DCR Secondary
		(V·μsec)	(μH) min	(μH) max	(Ω) typ	(Ω) typ
GX-01-001	1:1	30	1200	0.40	0.30	0.30
GX-01-002	1:1.3	30	1200	0.40	0.30	0.37
GX-01-003	1:2	22	675	0.40	0.21	0.40
GX-01-004	1:2.5	20	590	0.40	0.20	0.50

Notes

- 1- The volt-time product limits the peak flux density to 0.20 Teslas when used in a bi-polar drive application. Referred to primary.
- 2- Inductance measured at 10kHz/0.1Vac
- 3- Leakage Inductance is measured at primary terminals with secondary shorted
- 4- Operating temperature includes component self-heating
- 5- Electrical specifications at 25°C
- 6- Other combinations upon request

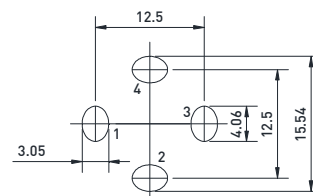
Dimensions

Dimensions in mm



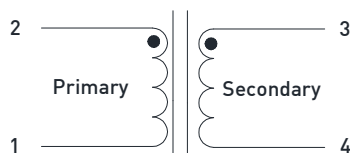
Dot Indicates pin 1

Recommended pad layout



View in mounting direction

Schematic



Marking

Part Number
PRAX / Date Code

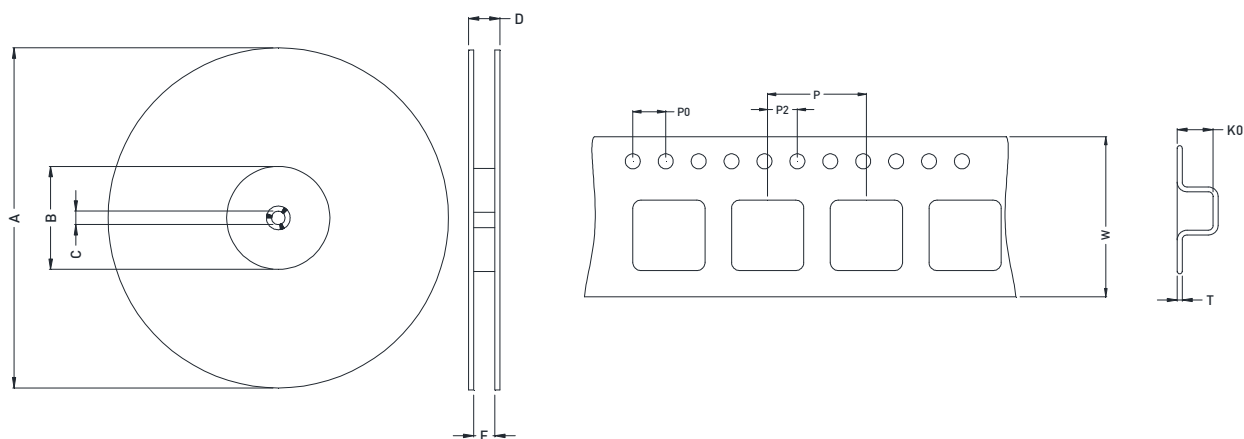
Revised: 25/07/2013

Specifications subject to change without notice

Packaging information

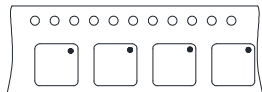
Delivery form	Tape & reel
	13" size
	450 pcs/reel
	According EIA 481 Std.

Tape & reel specifications



Reel dimensions (mm)				
A	B	C	D	E
330	100	13	38.4	32.4

Tape dimensions (mm)					
W	P	P0	P2	K0	T
24	16	4	2	6.8	0.4

Orientation


Revised: 25/07/2013

Specifications subject to change without notice